

Majestic Manufacturing, Inc.

Majestic Manufacturing, Inc. * PO Box 128
4536 State Route 7, New Waterford, Ohio 44445

Subject: Stabilizer Assembly TM-1400 & TM-1800 Models

ATTN: OWNER/OPERATOR

This bulletin pertains to the operation of your Majestic unit. This Service Bulletin **must** remain with the owner's manual at **all** times. If you have any questions regarding the Bulletin, contact our office at 330/457-2447, M-F 8:00a.m. -4:30p.m. E.S.T. ** Fax 330/457-7490.

SERVICE BULLETIN

Date: May 1, 1991

S.B. Number: 91-4

Notice:

This service bulletin is being issued to all owner/operators of the TM-1400 & TM-1800 Scooter Buildings to inform them of the importance of the stabilizer assembly installed on this model scooter building.

This stabilizer assembly is installed to the gooseneck assembly (porch) at our factory for the safe raising and lowering of this assembly and must be **ATTACHED** at all times. Periodically inspect the ride for any weld or part failures.

Any failures in this assembly must be corrected before any further operation of the gooseneck assembly. Failure to comply with this bulletin may result in serious injury to personnel involved with this ride and Majestic Manufacturing cannot be held responsible for those injuries.

Inspect for cracks or failures annually.

Inspect these two weld areas for any cracks or weld failures quarterly or after every third operation of the gooseneck; whichever may come first. Inspect and replace the spring if it is broken. Coat with grease annually.

Supplement to this bulletin will be issued to advise you the owner/operator of Majestic Manufacturing's recommendation for adding a safety feature to your ride, in the field, if you so desire.

If you have any questions on factory standards or procedures on our equipment, contact Majestic Manufacturing, Inc. during normal business hours of 8:00 a.m. to 4:30 p.m. Monday through Friday, E.S.T. at 330/457-2447 or toll free at 1-888-MAJ-RIDE.

*See print (H-175)

Majestic Manufacturing, Inc.

Majestic Manufacturing, Inc. * PO Box 128
4536 State Route 7, New Waterford, Ohio 44445

Subject: Stabilizer Assembly Supplement

ATTN: OWNER/OPERATOR

This bulletin pertains to the operation of your Majestic unit. This Service Bulletin **must** remain with the owner's manual at **all** times. If you have any questions regarding the Bulletin, contact our office at 330/457-2447, M-F 8:00a.m. -4:30p.m. E.S.T. ** Fax 330/457-7490.

SERVICE BULLETIN

Date: May 22, 1991

S.B. Number: S.B. 91-4 Supplement to Service Bulletin 91-4

Notice:

Service Bulletin 91-4 refers to a recommended safety feature that may be added to the stabilizer assembly in the field, if so desired. The following is a suggested way of adding that safety feature.

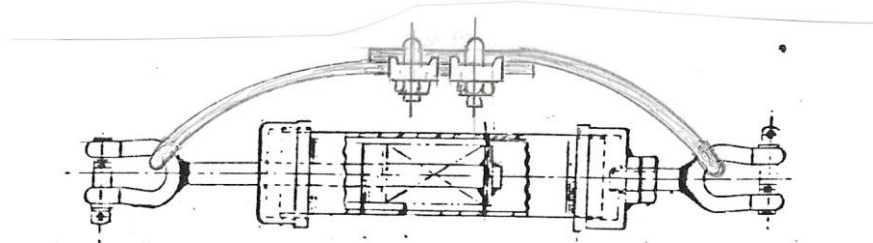


Figure 1.

Extend the stabilizer to a maximum travel and fasten the cable as shown in Figure 1. We recommend a 5/16" diameter, 7 x 19 strand core galvanized aircraft cable with a 9800# test strength or better.

If you have any questions on factory standards or procedures on our equipment, contact Majestic Manufacturing, Inc. during normal business hours of 8:00 a.m. to 4:30 p.m. Monday through Friday, E.S.T. at 330/457-2447 or toll free at 1-888-MAJ-RIDE.

*See print (H-175)