

Majestic Manufacturing, Inc.

Majestic Manufacturing, Inc. * PO Box 128
4536 State Route 7, New Waterford, Ohio 44445

Subject: Musik Express Bolts on the Sweep Bracket

ATTN: OWNER/OPERATOR

This bulletin pertains to the operation of your Majestic unit. This Service Bulletin **must** remain with the owner's manual at **all** times. If you have any questions regarding the Bulletin, contact our office at 330/457-2447, M-F 8:00a.m.-4:30p.m. E.S.T. ** Fax 330/457-7490.

SERVICE BULLETIN

Date: February 28, 2001

S.B. Number: 2001-01

Notice:

This Service Bulletin is to be observed by all **Musik Express** owners and operators.

In a continuing effort to strive for a safe and profitable operation of your Musik Express unit, the following bolts are to be checked at the beginning of every month. See Figure 1. The bolts holding the Sweep Mounting Bracket and the Sweeps together are designed with a nylon nut or a locking nut. These need to be tightened for they may work loose over time. Majestic Manufacturing Inc. requires that the entire Sweep Mounting Bracket bolts and Sweep bolts be checked for tightness at the beginning of every month.

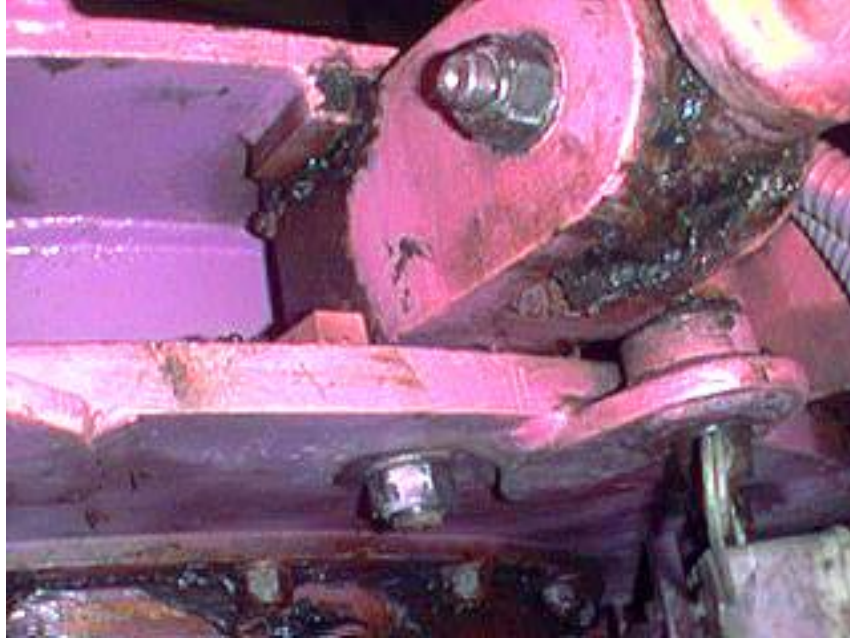


Figure 1.

CHECK NUTS

If you have any questions on factory standards or procedures on our equipment, contact Majestic Manufacturing, Inc. during normal business hours of 8:00 a.m. to 4:30 p.m. Monday through Friday, E.S.T. at 330/457-2447 or toll free at 1-888-MAJ-RIDE.