

Majestic Manufacturing, Inc.

Majestic Manufacturing, Inc. * PO Box 128
4536 State Route 7, New Waterford, Ohio 44445

Subject: Musik Express Tub Bracket Assembly

ATTN: OWNER/OPERATOR

This bulletin pertains to the operation of your Majestic unit. This Service Bulletin **must** remain with the owner's manual. If you have any questions regarding the Bulletin, contact our office at 330/457-2447, M-F 8:00a.m. -4:30p.m. E.S.T. ** Fax 330/457-7490.

SERVICE BULLETIN

Date: June 27, 2000

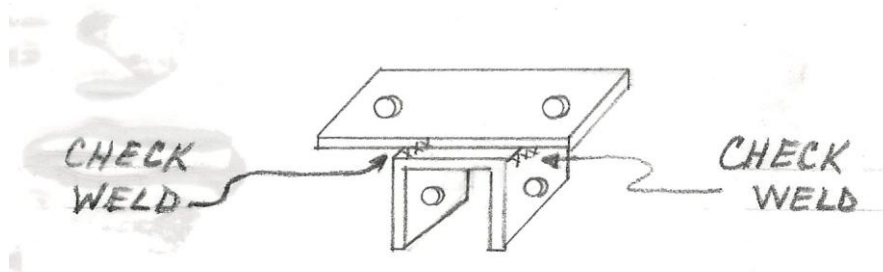
S.B. Number: 2000-01

Notice:

This service bulletin is to be observed by all **Musik Express** owners and operators.

All pin attachment points under each tub must be inspected immediately and report to Majestic Mfg. if any cracking is found. The area to look for is the weldment between the flat plate and U channel.

Fig. 1



This inspection must be performed prior to the next operation of the ride. Any cracks or broken welds **must** be repaired immediately. Do not put the tub into service until a thorough inspection has been performed and the repairs completed.

If unsure about each and every pin attachment point location, please call Majestic Manufacturing, Inc.

If you have any questions on factory standards or procedures on our equipment, contact Majestic Manufacturing, Inc. during normal business hours of 8:00 am. to 4:30 p.m. Monday - Friday, E.S.T. at 330/457-2447.