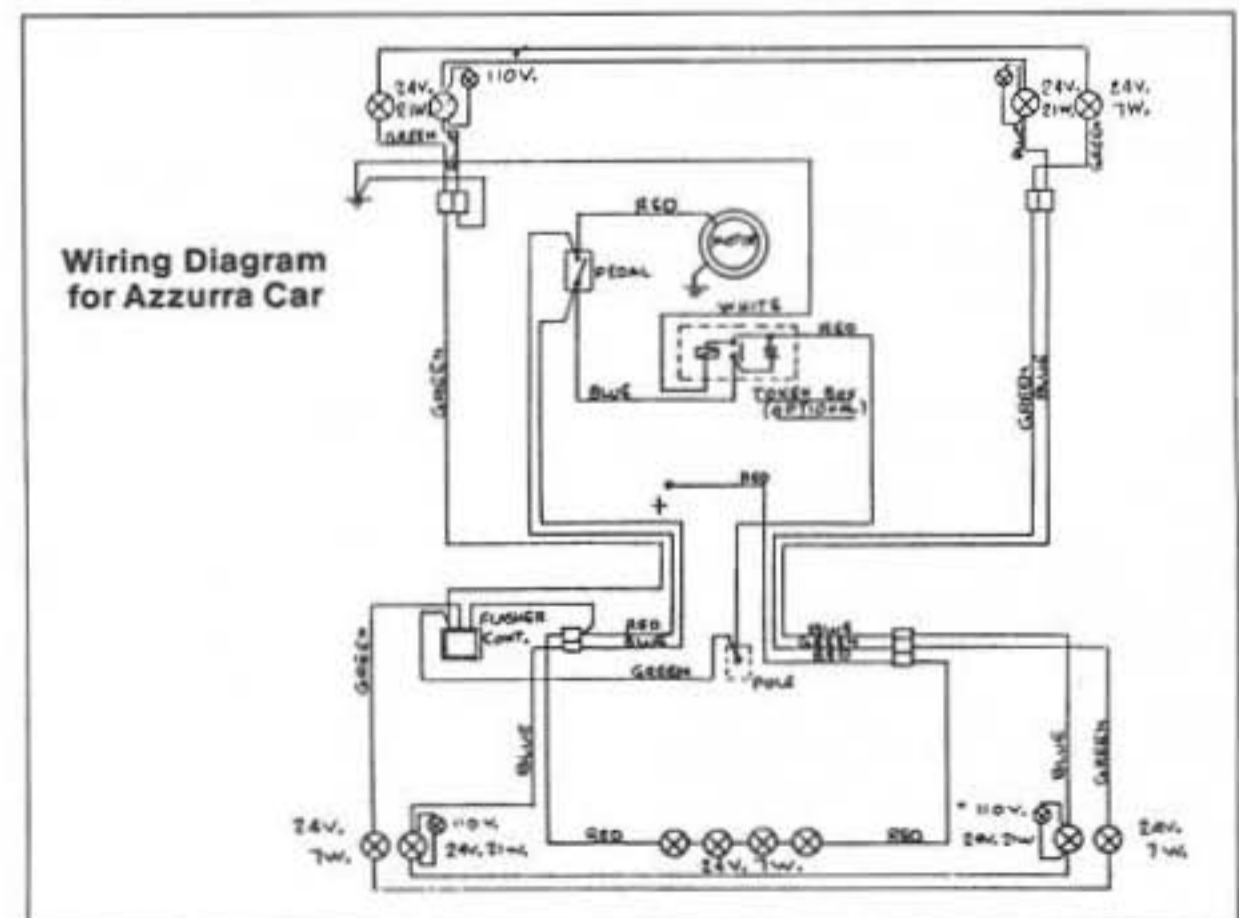
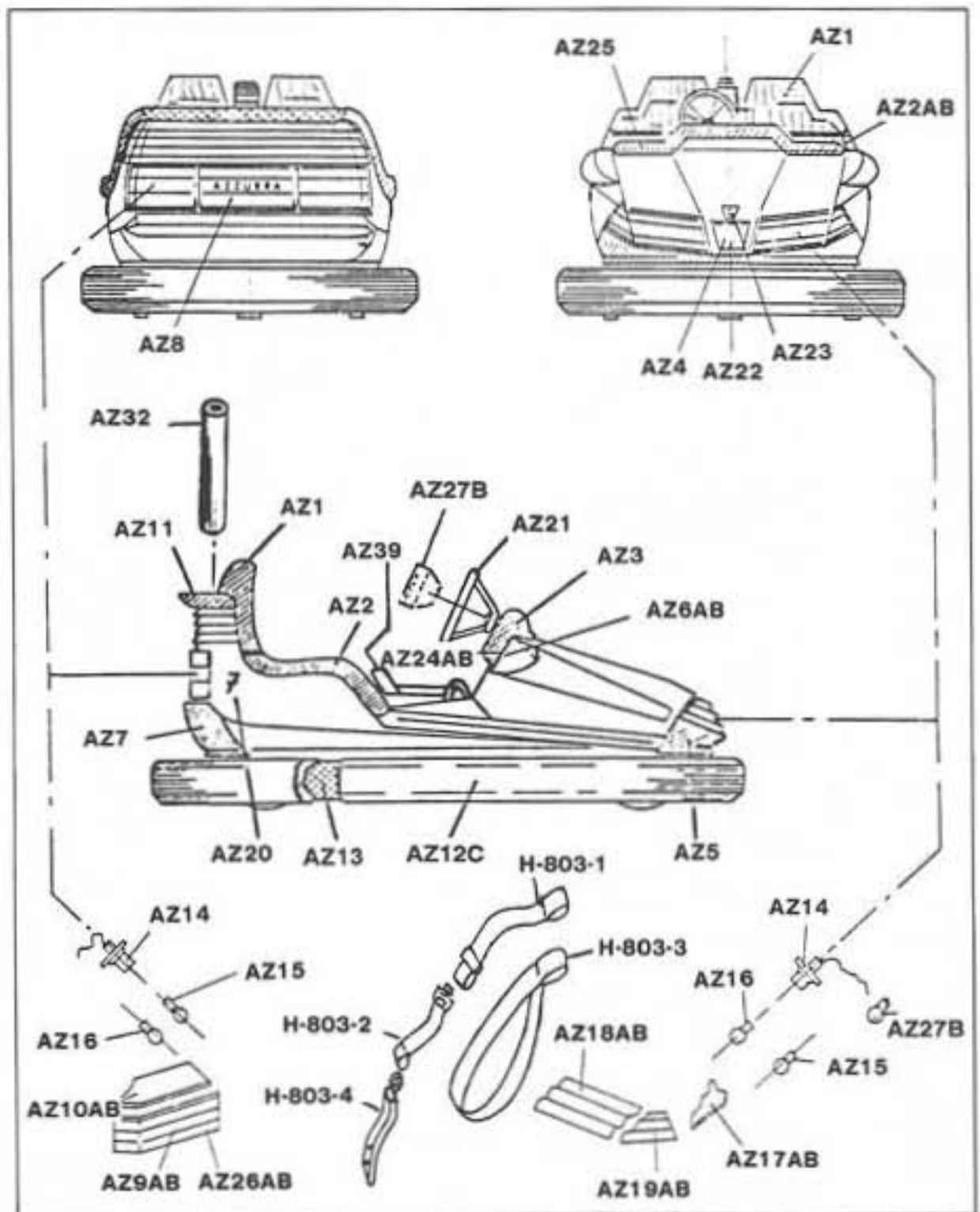
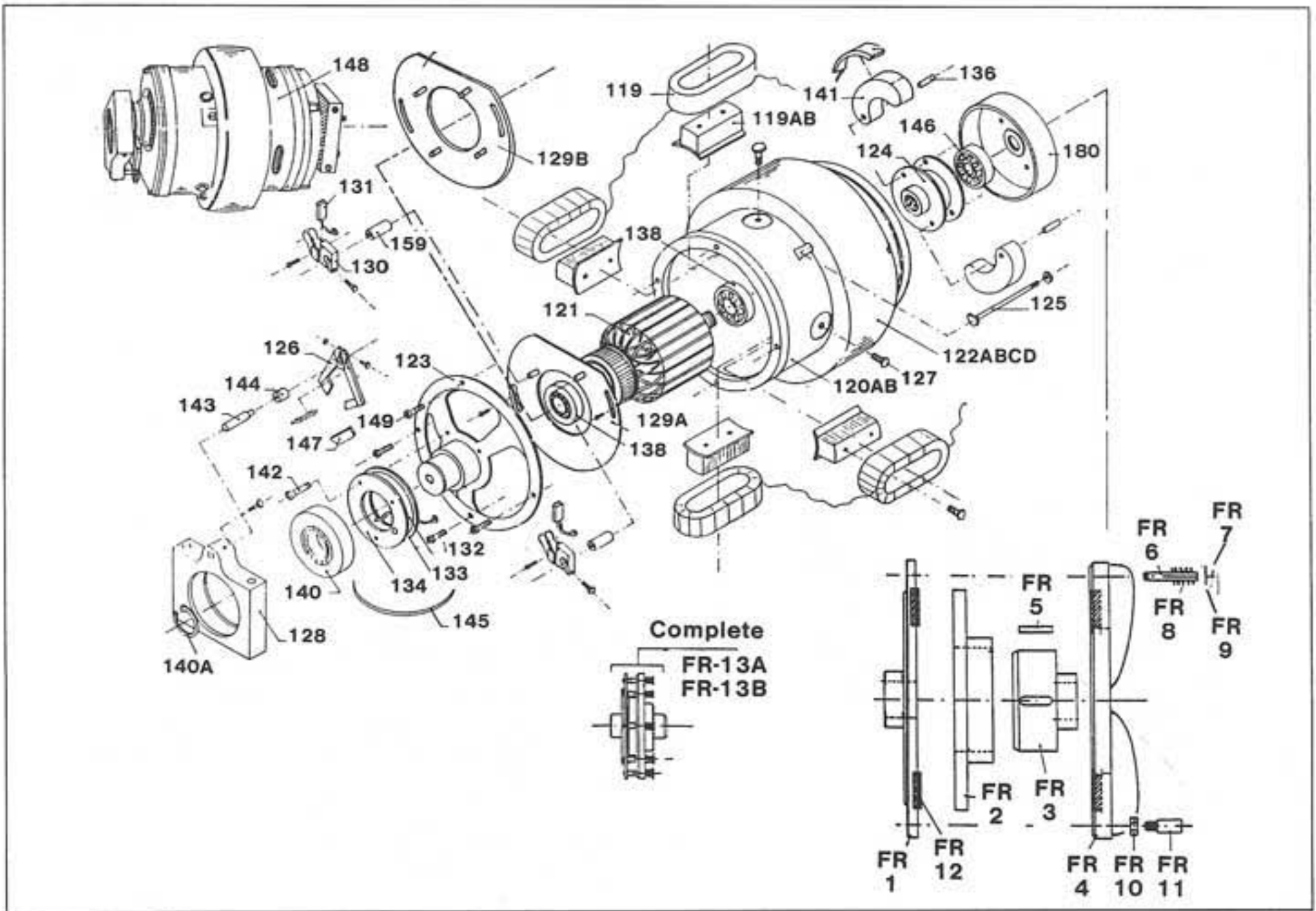


# AZZURRA BODY STYLE 86 - 89

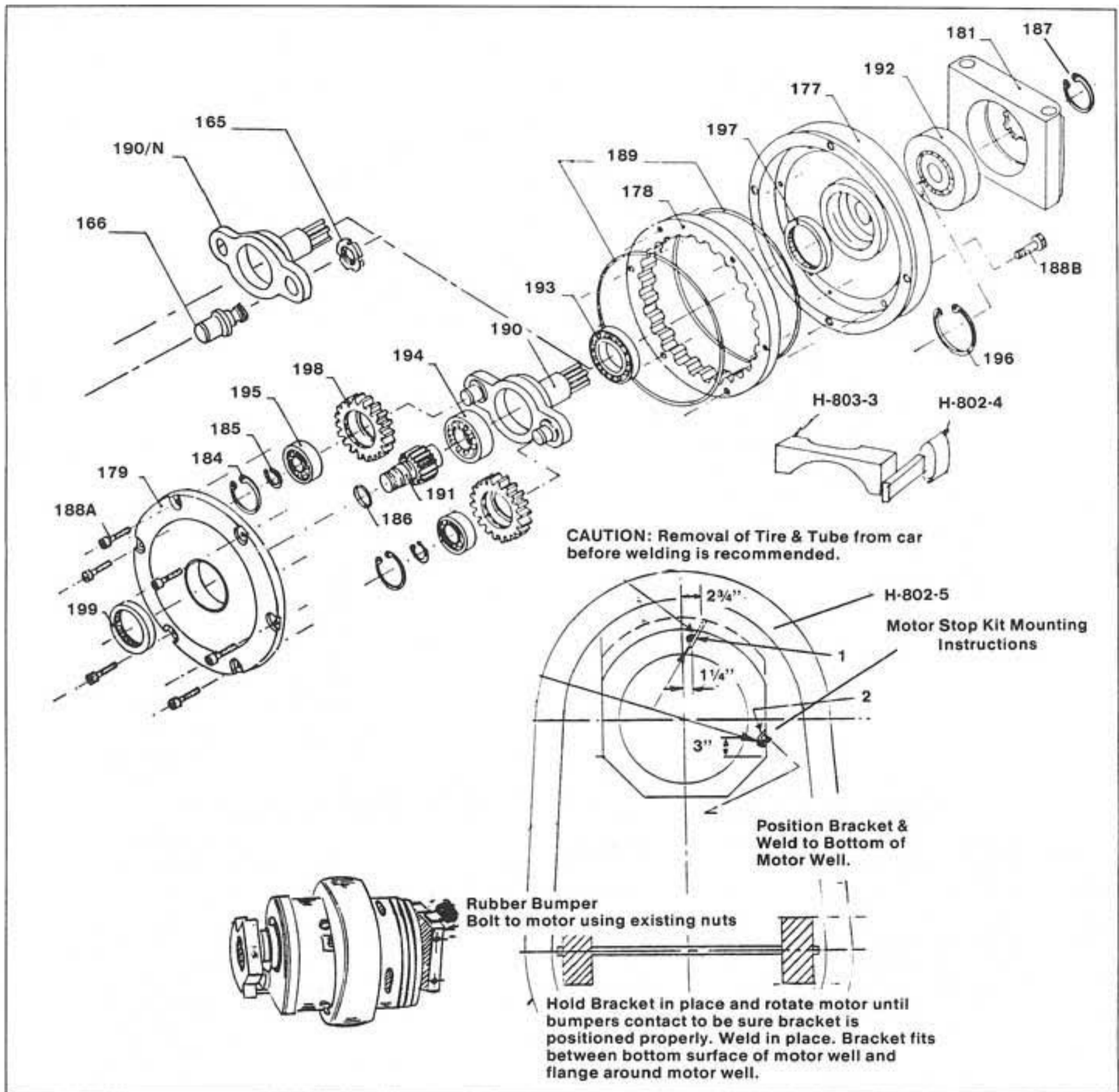
Part No.	Description
AZ1	Head Rest
AZ2A	Seat Right
AZ2B	Seat Left
AZ3	Dashboard
AZ4	Coin Box Frame
AZ5	Front Plastic Spoiler
AZ6A	Mirror Frame Right
AZ6B	Mirror Frame Left
AZ7	Tail Plastic Spoiler
AZ8	Central Tail Lens
AZ9A	Sideback Red Glass Right
AZ9B	Sideback Red Glass Left
AZ10A	Tail Partition Right
AZ10B	Tail Partition Left
AZ11	Tail Spoiler
AZ12C	Tire
AZ13	Inner Tube
AZ14	Socket
AZ15	Bulb 24V - 5W
AZ16	Bulb 30V - 21W
AZ17A	Front Partition Right
AZ17B	Front Partition Left
AZ18A	Headlight White Lens Right
AZ18B	Headlight White Lens Left
AZ19A	Headlight Orange Lens Right
AZ19B	Headlight Orange Lens Left
AZ20	Number
AZ21	Steering Wheel
AZ22	Coin Box Plate
AZ23	Majestic Logo
AZ24A	Mirror Right
AZ24B	Mirror Left
AZ25	Coin Box Plate
AZ26A	Tail Orange Lens Right
AZ26B	Tail Orange Lens Left
AZ27B	689 Steering Wheel Pad
H-803-1	Female Paddle Latch Seatbelt
H-803-2	Male Paddle Latch Seatbelt
H-803-3	Loop Seatbelt
H-803-4	Paddle Latch Seatbelt Bracket
AZ32	Stinger Pole Pad
AZ34	Stainless Steel Button Bolt
AZ35	Stainless Trim Between Seat
AZ36	Token Mechanism Complete
AZ37	Trim Screw
AZ38	Lens Screw
H-806-1	Lap Bar Complete
H-806-1A	Lap Bar Pad
H-806-8	Gas Shock
F1931	Lap Bar Cap Nut
F1861	Lap Bar Shoulder Bolt
F2261	Lap Bar Plastic Washer
H-807-4	Steel Bracket Right Hand
H-807-5	Steel Bracket Left Hand
1096	Bumper Tire Talc





## COMPLETE MOTOR/AUTOMOTIVE CLUTCH

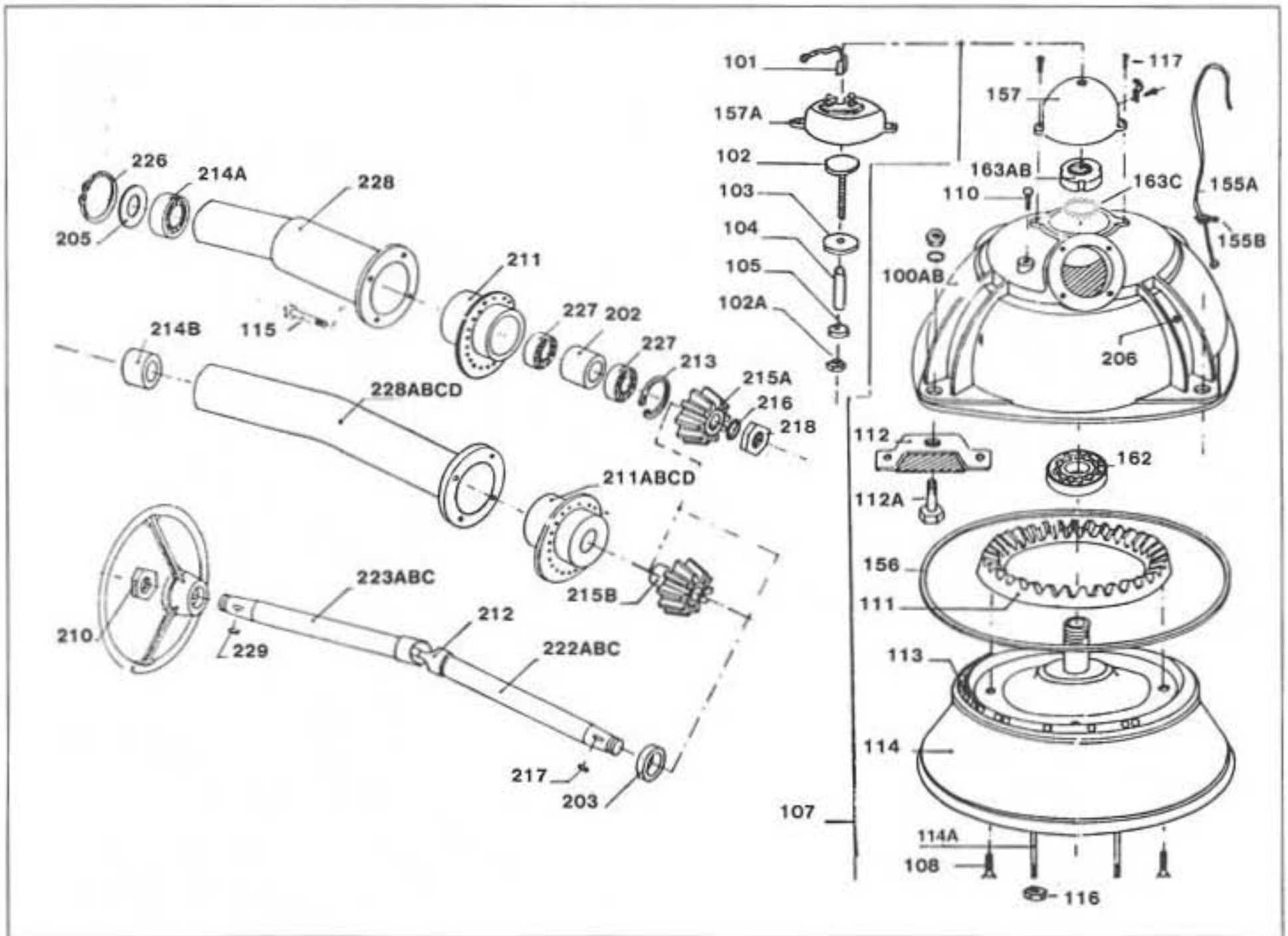
Part No.	Description	Part No.	Description	Part No.	Description
119A	Field Coils 90 Volt	136	Clutch Shoe Pin		Labor To Rebuild Motors _____
119B	Field Coils 48 Volt	138	Bearing (6204 2RS)	149	Allen Bolt
120A	Motor Housing 90 Volt	140	Bearing (6208 2RS)	159	Insulator
120B	Motor Housing 48 Volt	140A	Snap Ring	180A	Clutch Flywheel
121A	Armature 90 Volt	141	Clutch Shoe	180B	Floor Pick-up Clutch Flywheel (Finned)
121B	Armature 48 Volt	142	Screw	FR-13	A. Complete Clutch Ceiling/Pick-up B. Complete Clutch Floor/Pick-up
122	Front Wheel	143	Brush Holder Pin	FR-1	Gear Box Side Plate
	A. Black Rubber	144	Insulator Tube	FR-2	Clutch Disk
	B. New Poly	145	Insulator	FR-3	Coupling
	C. Majestic New Poly	146	Bearing	FR-4	Disk Holder
	D. Resurfaced Poly	147	Brush without Wire	FR-5	Key
123	Bell Housing	148	Complete Motor sold without Drive Wheel	FR-6	Spring Pin
124	Clutch Shoe Holder		A. 90 Volt Motor	FR-7	Snap Ring
125	Fixing Bolt		B. 48 Volt Motor	FR-8	Spring
126	Double Brush Holder		1. Clutch Shoe Type Motor New	FR-9	Washer
127	Hex Bolt		2. Clutch Shoe Type Motor Reman	FR-10	Hex Nut
128	Motor Mounting Block (2)		3. Clutch Automotive Type Motor New	FR-11	Connection Pin
129A	Plate Mounting Brush (2)		4. Clutch Automotive Type Motor Reman	FR-12	Clutch Shoe Band
129B	Plate Mounting Brush (4)				
130	Single Brush Holder				
131	Brush with Wire				
132	Commutator Ring				
133	Insulator Plate				
134	Insulator Plate				



## PLANETARY TRANSMISSION

Part No.	Description	Part No.	Description	Part No.	Description
177	Transmission - Case	187	Snap Ring	197	Grease Retainer 55.70.8
178	Ring Gear	188A	Allen Bolt	198	Drive Gear
179	Transmission Cover	188B	Hex Bolt	199	Grease Retainer 30.47.6
180A	Clutch Flywheel	189	Large O Ring	H-803-3	External Motor Stop
180B	Floor Pick-up Clutch Flywheel (Finned)	190	Mounting Gear	201	Shock Absorber
181	End Block	191	Spur Gear	H-802-4	Rubber Stop
184	Large Ring	192	Bearing (6208 2RS)	190N	Mounting Gear
185	Small Ring	193	Bearing (16006)	165	Lock Nut
186	Small O Ring	194	Bearing (6204)	166	Pin
		195	Bearing (6202)	H-802-5	External Motor Stop Kit
		196	Large Ring	I095	Transmission Grease (Qt)

NOTE: Order bumper brackets and bumpers as a complete assembly. Part No. H-802-5.



## MOTOR HOUSING AND STEERING UNIT

Part No.	Description	Part No.	Description	Part No.	Description
100A	Cover Outer Housing	116	Motor Stud Nut	215A	Bevel Pinion Gear (taper)
	Center Column	117	Cover Screws	215B	Bevel Pinion Gear (straight)
100B	Cover Outer Housing	155A	Power Wire	216	Lock Washer
	Offset Column	155B	Wire Holder (3 Required)	217	Short Key
101	Carbon Brush with Wire	156	Dust Ring	218	Hex Nut
102	Brass Contact Disk Bolt	157	Cover	222	Lower Steering Shaft
102A	Brass Contact Disk Hex Nut	162	Bearing (32207)		A. CX
103	Large Insulator Washer	163A	Nylon Lock Nut		B. Turbo
104	Insulator Tube	163B	Lock Nut used w/Tab Washer		C. Azzurra
105	Small Insulator Washer	163C	Tab Washer	223	Upper Steering Shaft
107	Complete Steering Housing	202	Large Spacer Sleeve		A. CX
108	Bolt	203	Small Spacer Sleeve		B. Turbo
110	Grease Fitting	205	Dust Ring		C. Azzurra
111	Ring Gear	206	Housing Grease Fitting		D. Futura
112	Damper/Shock Absorber	210	Hex Nut	226	Snap Ring
112A	Bolt and Nut	211A	Gear Adjuster Aluminum	227	Bearing
113	Ball Bearing (71 Per Housing)	211B	Gear Adjuster Gray Nylon	228	Steering Column Case
114	Inner Housing	211C	Gear Adjuster Black Nylon		A. CX
114A	Stud	211D	Gear Adjuster Black Nylon		B. Turbo
114B	Metric Tape for 114A	212	Joint Coupling		C. Azzurra
	Replacement M12 x 1.75	213	Snap Ring		D. Futura
115A	Column Bolt Short	214A	Bearing	229	Large Key
115B	Column Bolt Long	214B	Nylon Bushing		

# CAR PEDAL

Part No.	Description
230A	Pedal Assembly
230B	Pedal Repair Kit
230C	Dual Pedal Contact Kit
231	Large Bracket
232	Small Bracket
233A	Pedal
233B	Nut
233C	Nut
234	Spring Pedal
235	Switch Hinge
236	Round Head Bolt
237	Pedal Hinge
238	Bolt and Nut
239	Large Copper Block
240	Small Copper Block
241A	Flat Insul. Cut Corners
241B	Flat Insul. with Holes
242	Insulator Washer
243	Screw
244	Square Insulator (2 required)
245	A. Complete Micro Pedal Assembly B. D. C. Solenoid/Contact Points 1. 28V - 40V 2. 40V - 75V 3. 75V - 100V C. Micro Switch D. Round Solenoid Repair Kit E. Square Solenoid Repair Kit
246A	Spring Tool for Pedal
246	Lock Washer
247	Bumper Rubber
248	Insulator Washer
249	Iron Flat Washer
401	Pedal Support Plate
402	Rubber Bumper
403	Plate Fixing Nut
404	Plate Fixing Screw
405	Micro Fixing Screw
406	Washer
407	Nut
408	Micro
409	Nut
410	Cableclip
411	Screw
412	Plastic Pedal
413	Washer
414	Spring
415	Lower Nut
416	Upper Nut
417	Washer
418	Relay Cable
420	Micro-Relay

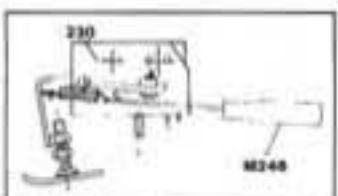
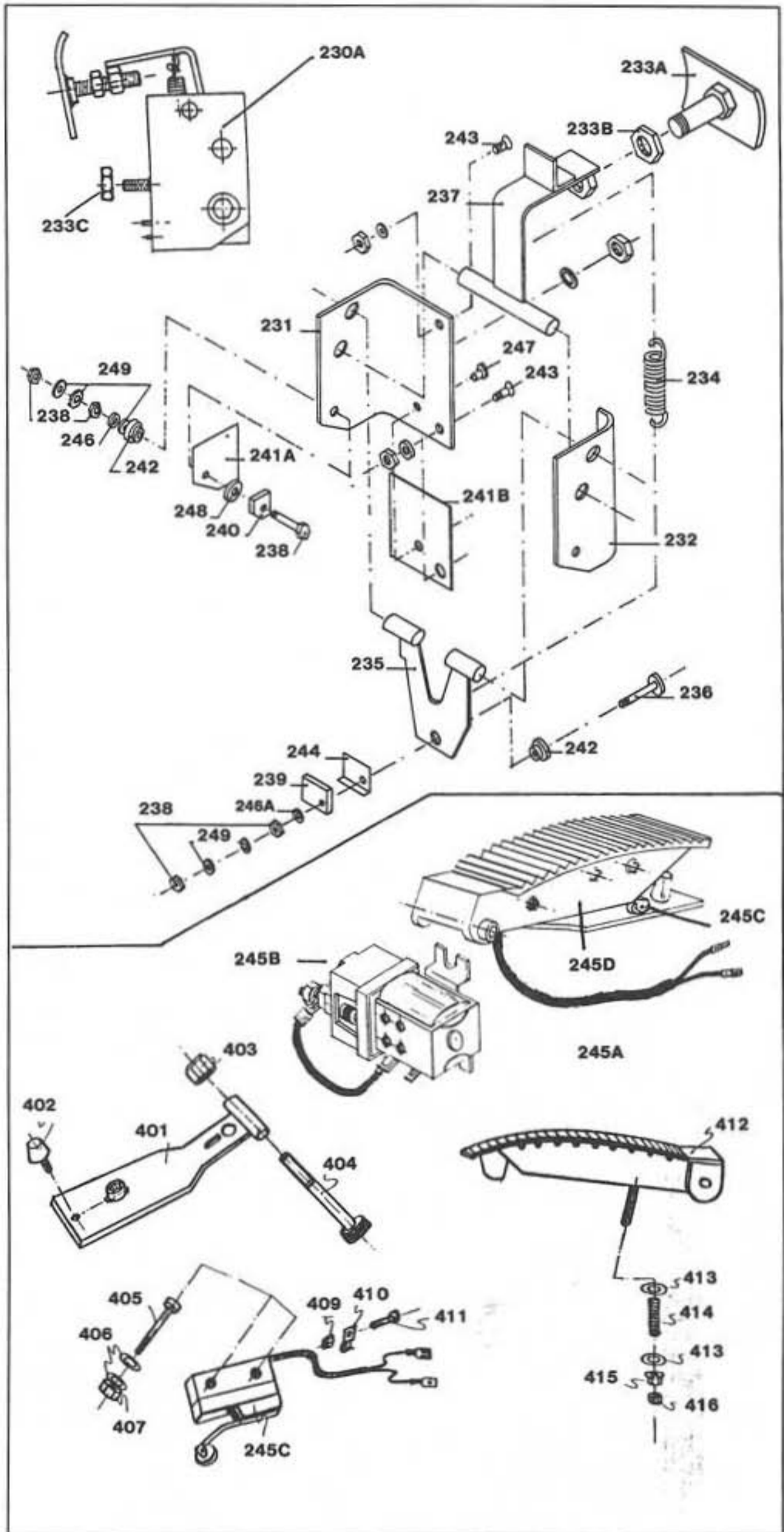
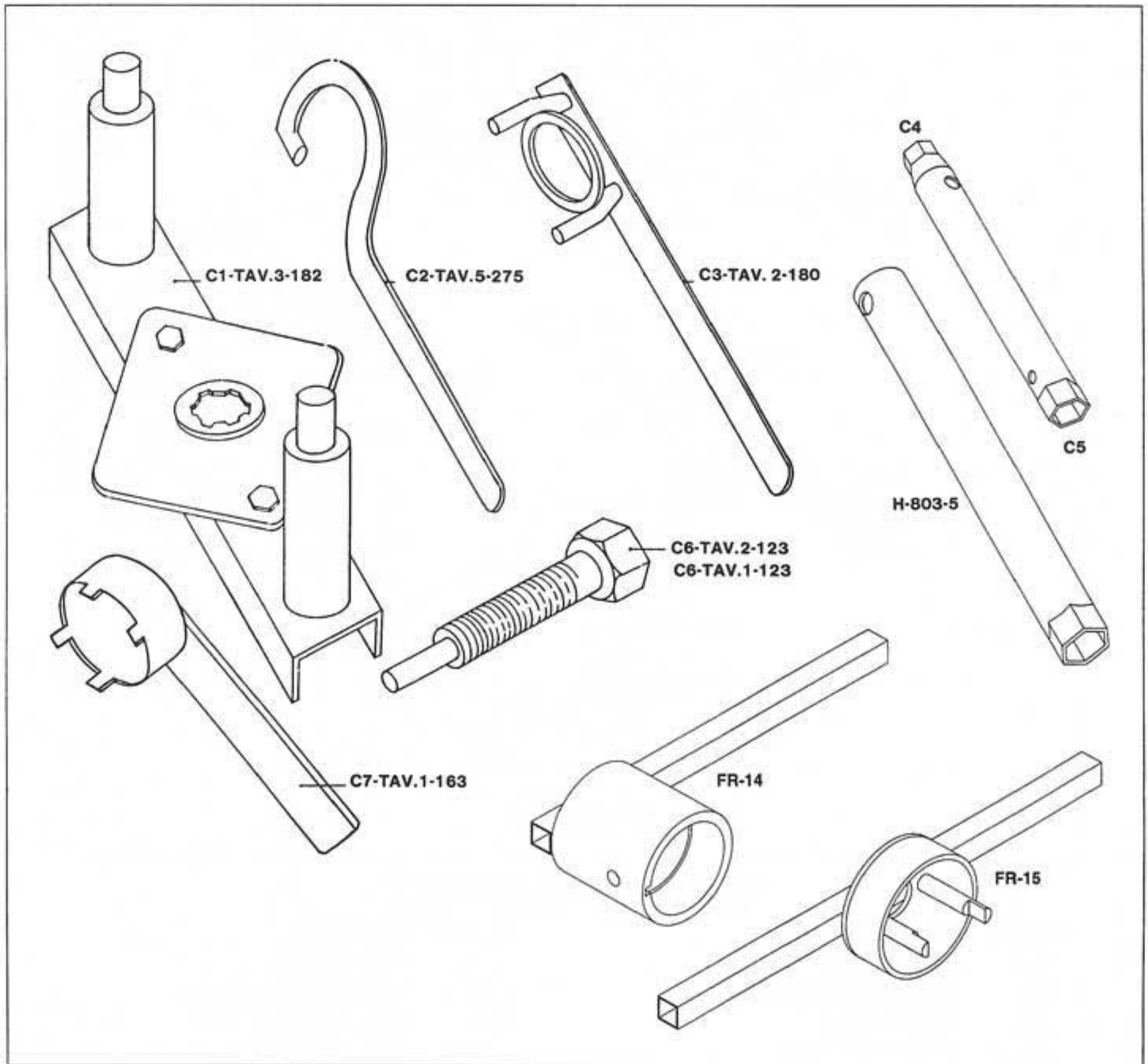
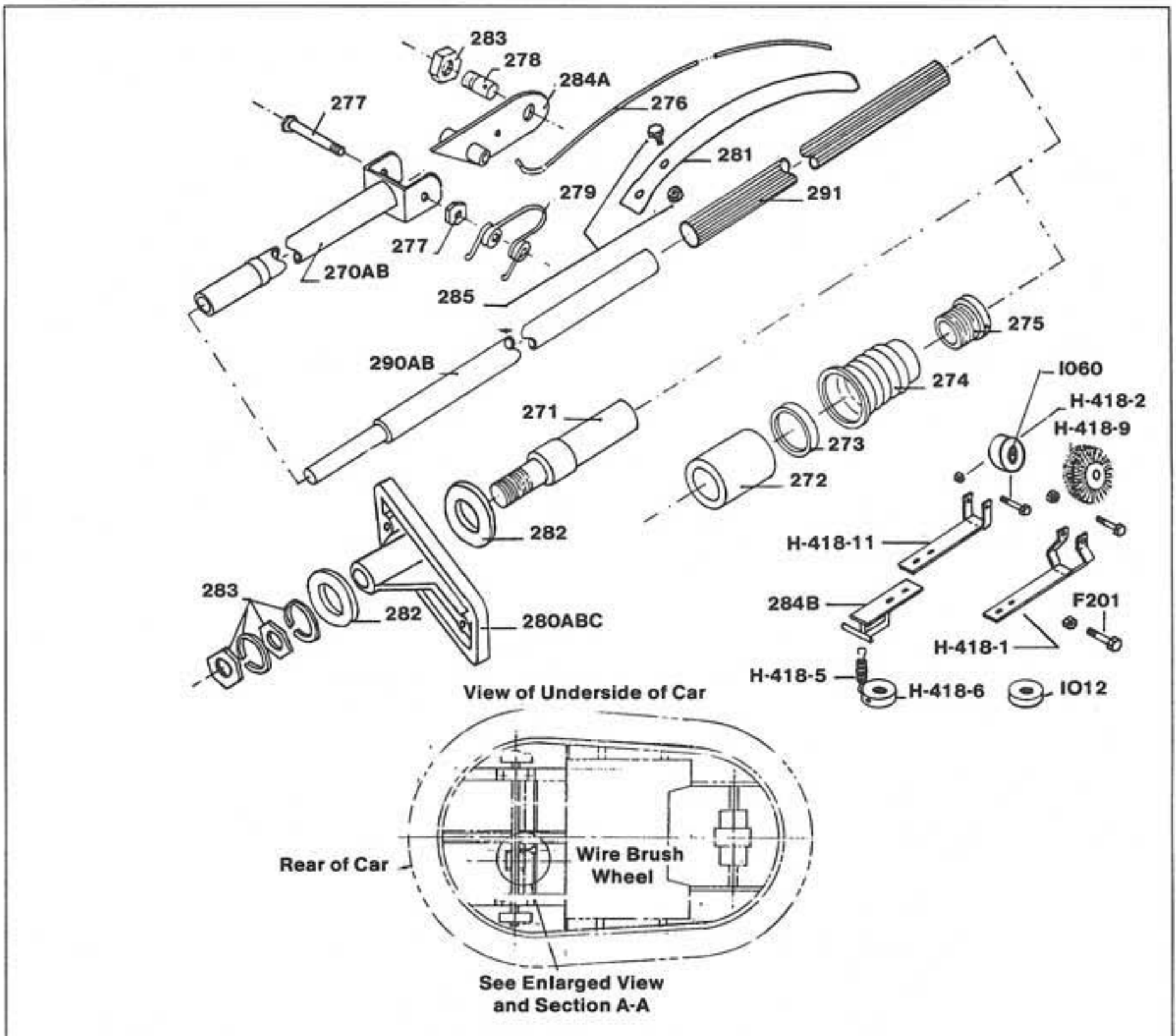


Illustration showing the proper method of using the spring installation tool, Part No. M246.



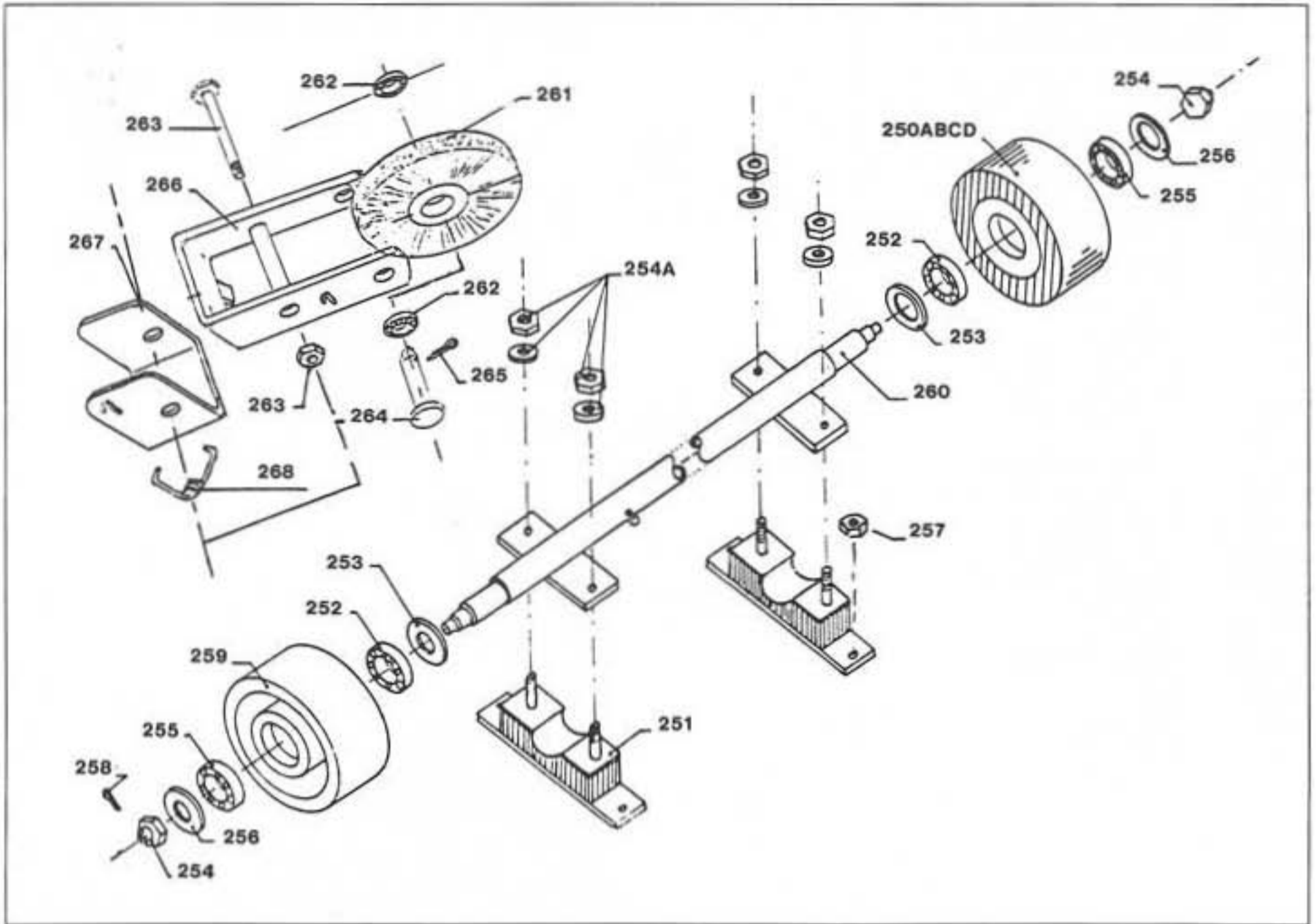
## CAR REPAIR TOOLS

Part No.	Description
C1-TAV.3-182	Transmission Holder
C2-TAV.5-275	Spanner Wrench
C3-TAV.2-180	Clutch Wrench
C4	Socket Tool
C5	Socket Tool
C6-TAV.1-123	Small Puller Bolt to remove #123
C6-TAV.2-123	Large Puller Bolt to remove #123
C7-TAV.1-163	Socket Wrench to remove #163
FR-14	Clutch Tool
FR-15	Clutch Tool
H-803-5	Steering Wheel Socket



## TROLLEY ASSEMBLY

Part No.	Description	Part No.	Description
270A	Trolley Rod Standard	284B	Trolley Holder
270B	Trolley Rod Extended	285	Nut and Bolt
271	Trolley Pole Holder	H-418-6	Coil Trolley Spring Collar
272	Rubber Sleeve	IO12	Height Adjusting Collar
273	Compression Ring	H-418-5	Coil Trolley Spring
274	Rubber Cover	H-418-11	Roller Holder
275	Rail Fitting	H-418-1	Brush Holder
276	Wire Wiper	290	A. STD. Trolley Pole B. Extended Trolley Pole
277	Hex Bolt and Nut	291	Trolley Pole Plastic Insulator
278	Headless Bolt	H-418-2	Aluminum Trolley Wheel with Nut and Bolt
279	Trolley Spring	H-418-9	3" Stainless Steel Wire Brush with Nut and Bolt
280	Trolley Holder Support Insulator A. Nylon for Azzurra Car B. Wood for Azzurra Car C. Wood for CX Car	F201	Socket Shoulder Screw
281	Flat Wiper Blade	IO60	Roller Oil Light Bushing
281A	Stainless Steel Wiper Blade	292	Complete Stinger Head with Roller
282	Washer	293	Complete Stinger Head with SS Wire Brush
283	Nut and Lock Washer	294	Complete Stinger with Stainless Wiper Blade
284A	Wire Holder	295	Complete Stinger Head with Stainless Steel Flat Wiper Blade

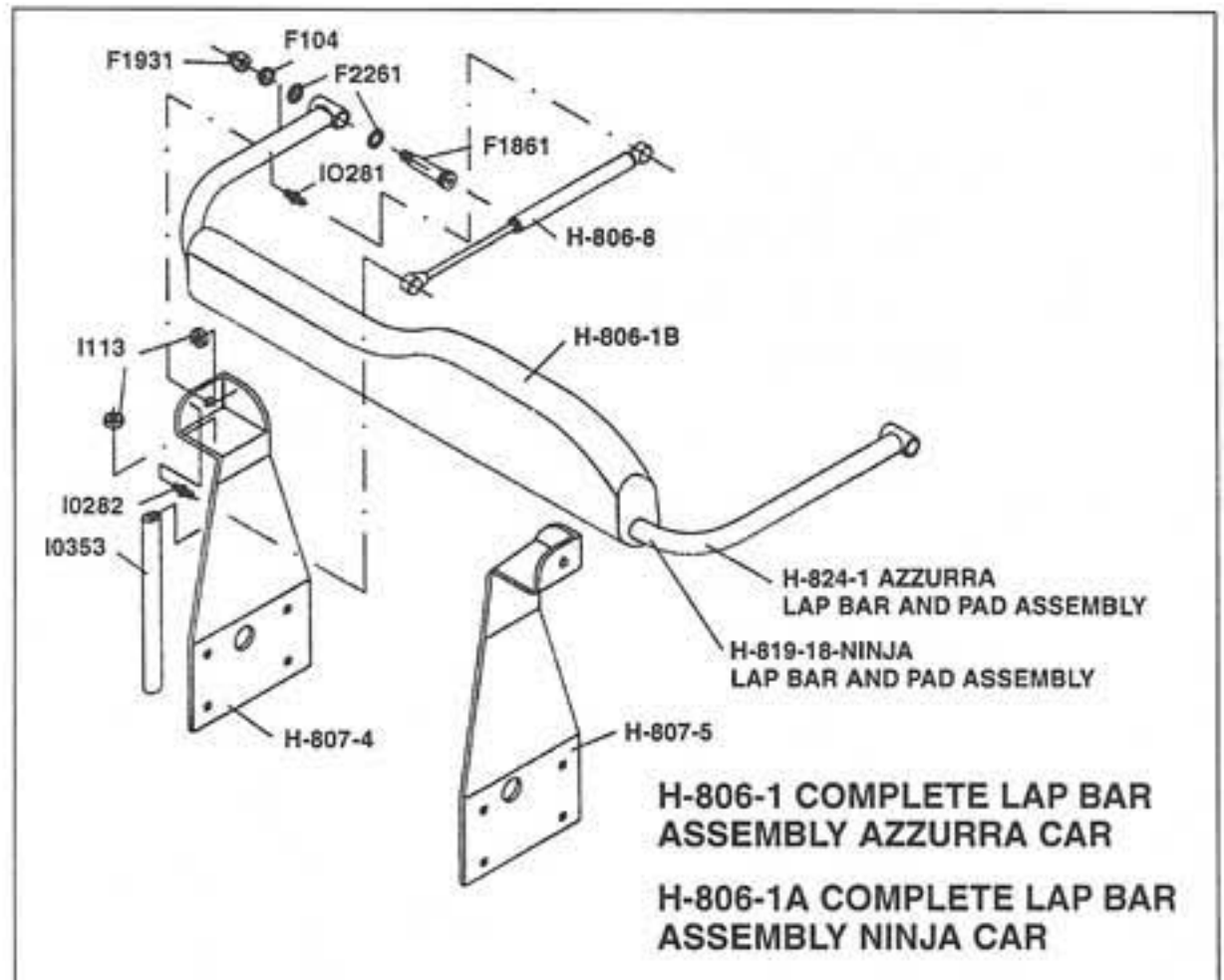


## REAR AXLE ASSEMBLY

Part No.	Description	Part No.	Description
250	A. Black Rubber B. New Polyurethane C. Majestic New Poly D. Resurfaced Poly	259	Iron Rear Wheel
251	Shock Absorber	260	Rear Axle
252	Bearing	261	Steel Brush
253	Washer	261A	Spacer for Brush Assembly
254	Castle Nut	262	Bearing
254A	Nut and Washer	263	Hex Bolt and Nut
255	Bearing	264	Pin
256	Washer	265	Cotter Pin
257	Nut	266	Brush Holder
258	Cotter Pin	267	Brush Support
		268	Spring (2 per unit)
		269	Complete Wire Brush Assembly

## LAP BAR ASSEMBLY AZZURRA

Part No.	Description
H-806-1	Azzurra Lap Bar Complete
H-824-1B	Lap Bar and Pad
H-806-1B	Lap Bar Pad
H-806-8	Shock Absorber
H-807-4	Lap Bar Bracket Right
H-807-5	Lap Bar Bracket Left
F1861	Shoulder Bolt
F2261	Flat Nylon Washer
F104	Lock Washer
F1931	Crown Nut
I0281	Weld On Ball Stud
I0282	Threaded Ball Stud
I0353	Rubber Guard
I113	Stoppers
D225	Lap Bar Warning Decal

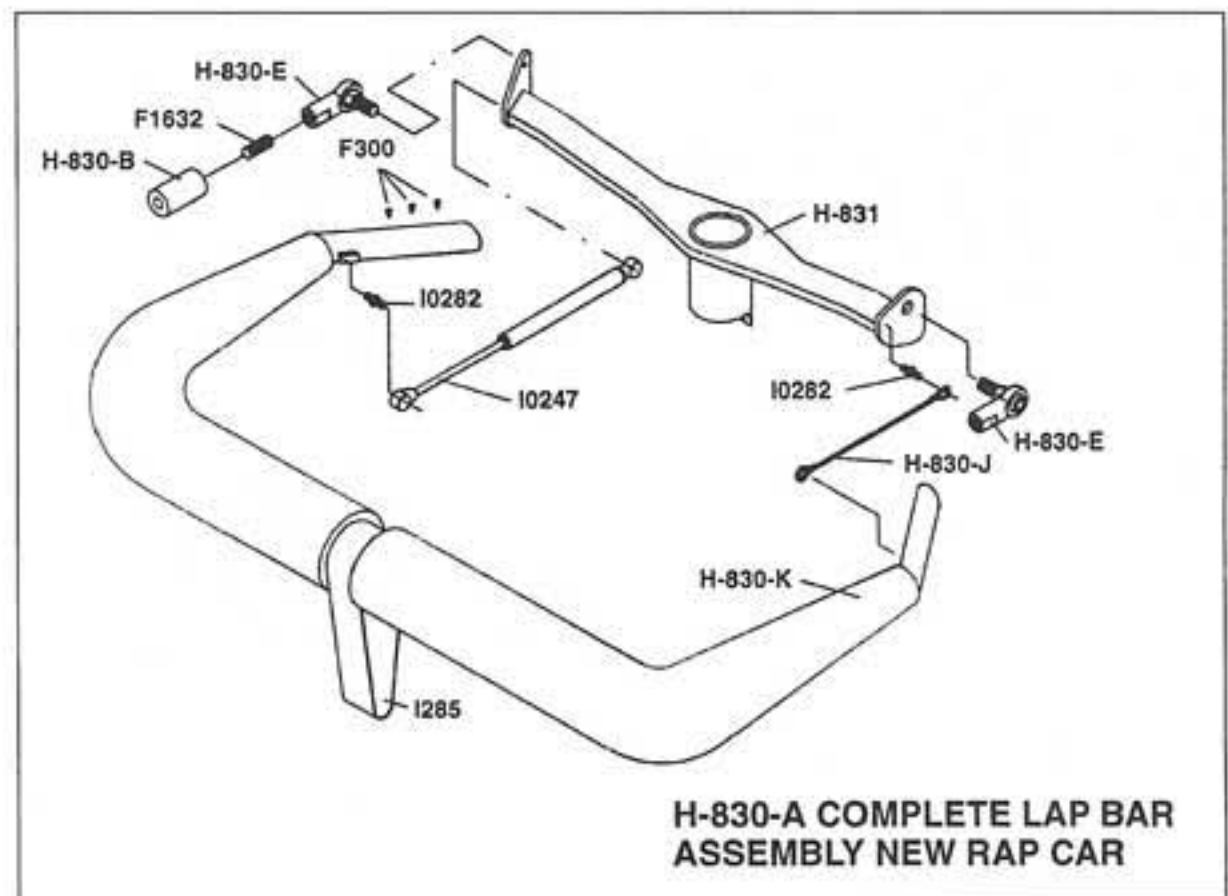


## NINJA

Part No.	Description
H-806-1A	Ninja Lap Bar Complete
H-819-18	Lap Bar and Pad
D225	Lap Bar Warning Decal

## NEW RAP

Part No.	Description
H-830-A	New Rap Lap Bar Complete
H-830-K	Lap Bar and Pad
H-831	Bracket
H-830-J	Safety Cable
H-830-E	Ball Swivel
H-830-B	Insert
F1632	Threaded Rod
F300	Nail Studs
I0247	Shock Absorber
I285	Strap
D225	Lap Bar Warning Decal



## DAILY INSPECTION SCHEDULE

	INITIAL APPROPRIATE BLOCK AFTER INSPECTION  DATE: WEEK ENDING ____ MO. ____ DAY ____ YR.	MONDAY	TUESDAY	WEDNESDAY	THURSDAY	FRIDAY	SATURDAY	SUNDAY	COMMENTS/REPAIRS
<b>SCOOTER BUILDING INSPECTION</b>	RECTIFIER SPEED SETTING #3 RECOMMENDED SPEED 3 F.P.S.								
	ALL FENCE INSTALLED								
	ENTER/EXIT GATES OPERABLE								
	RAMPS AND HINGE PINS INSTALLED								
	RAMP ANTI-SKID TO FACTORY STANDARDS								
	RAMP RAILING & SPRING PINS INSTALLED								
	REMOVABLE BUMPER RAIL SECURE								
	HYDRAULIC SWITCH OFF								
	FENCE GUARDS INSTALLED (IF APPLICABLE)								
	CONTINUITY/NO SHORTS								
	CEILING PANELS SECURE								
	SAFETY RULES LEGIBLE								
	ALL SAFETY KEYS INSTALLED								
	EXITS NOT BLOCKED								
	BUMPER CAR BLDG. FLOOR DRY								
<b>BUMPER CAR INSPECTION</b>	SEAT BELTS 2 PER CAR								
	POLE PAD 1 PER CAR								
	STINGER HEAD 1 PER CAR								
	BUMPER TIRE CONDITION								
	STEERING WHEEL OPERATIONAL/CONDITION								
	STEERING WHEEL PAD SECURE/CONDITION								
	CAR INTERIOR CLEAN								
	LAP BAR TO FACTORY STANDARDS								
BUMPER TIRE PRESSURE 10 PSI									

Questions or concerns regarding bumper car operation or safety, please call 1-888-MAJRIDES, Monday through Friday 8am to 4:30pm.